

Solar Install Proposal

Dave & Dawn Sierra
1965 Sheffield Drive
(916) 934-9587

Site Plan – 1965 Sheffield Drive

OWNERS

Dave and Dawn Sierra
1965 Sheffield Dr.
El Dorado Hills, CA 95762

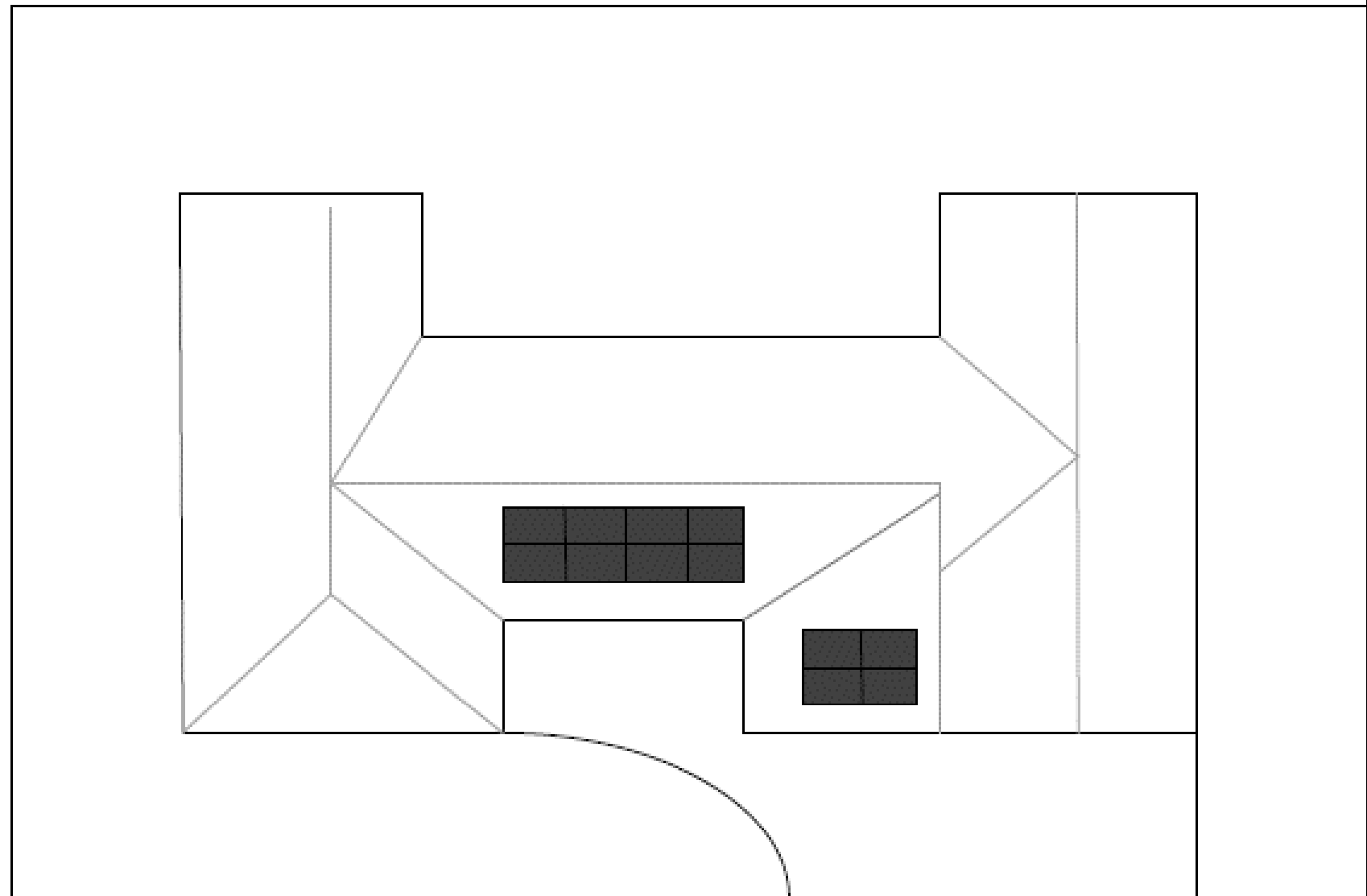


Contractor

North State Solar Energy
PO Box 899
Forest Ranch, CA 95942
(530) 893-4741
Lic. B813508

Project

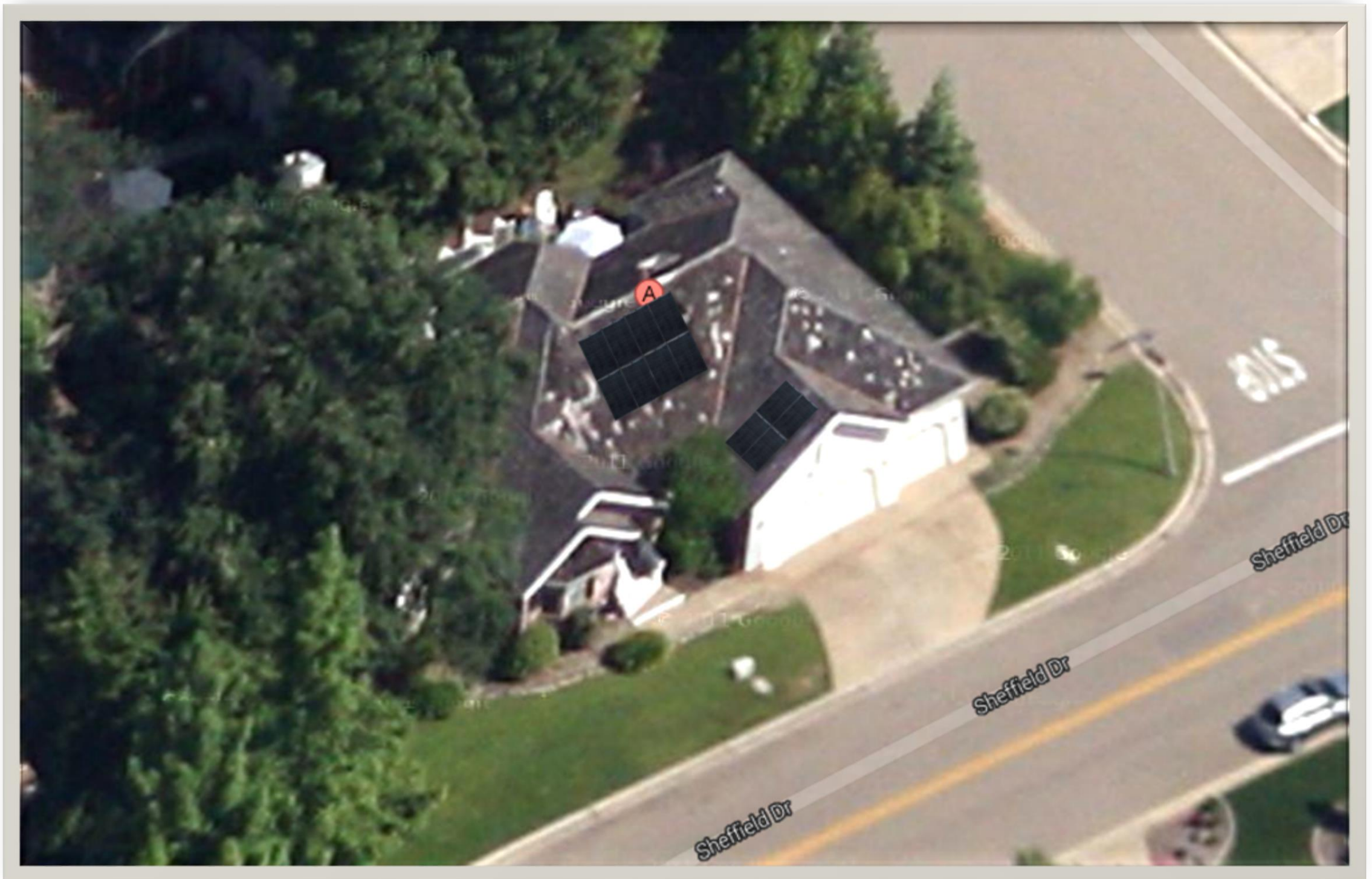
2.5 KW Roof Mount, Grid-
Tied Photovoltaic system
Using microinverters



Stratford Circle

Sheffield Dr.

Sat View with Modules - 1965 Sheffield Drive



Street View with Modules - 1965 Sheffield Drive



Contractor – North State Solar Energy

P.O. Box 899, Forest Ranch, CA 95942

(530) 342-7304

Home Page: <http://www.northstatesolarenergy.com/>

Solar Install Examples:



Material – SolarWorld Sunmodule SW 250 mono

Sunmodule⁺™

SW 250 mono / Version 2.0 and 2.5 Frame

World-class quality

Fully-automated production lines and seamless monitoring of the process and material ensure the quality that the company sets as its benchmark for its sites worldwide.

SolarWorld Plus-Sorting

Plus-Sorting guarantees highest system efficiency. SolarWorld only delivers modules that have greater than or equal to the nameplate rated power.

25 years linear performance guarantee and extension of product warranty to 10 years

SolarWorld guarantees a maximum performance degradation of 0.7% p.a. in the course of 25 years, a significant added value compared to the two-phase warranties common in the industry. In addition, SolarWorld is offering a product warranty, which has been extended to 10 years.*

*in accordance with the applicable SolarWorld Limited Warranty at purchase.
www.solarworld.com/warranty

Detailed spec sheet available at

<http://www.solarworld-usa.com/system-designers/~media/Global/PDFs/datasheets/sunmodule-solar-panel-250-mono-ds.pdf>



- Qualified, IEC 61215
- Safety tested, IEC 61730
- Periodic Inspection



ISO 9001
ISO 14001
Certified

